

# DARWEN VALE HIGH SCHOOL



## HOMework

**GENIUS IS ONE PERCENT INSPIRATION AND  
NINETY NINE PERCENT PERSPIRATION. AS A  
RESULT, A GENIUS IS OFTEN A TALENTED PERSON  
WHO HAS SIMPLY DONE ALL OF HIS HOMEWORK**

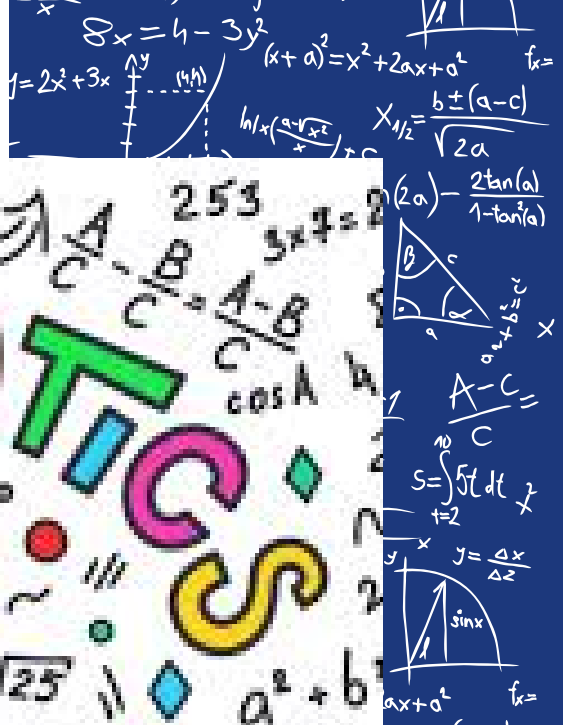
*THOMAS A. EDISON*



# **Homework Club**

## **Tuesdays 15:00 - 15:45**

### **in Room 106**

[illegible]
$$\begin{array}{c}
 X_{1/2} = \frac{b \pm (a-c)}{\sqrt{2a}} \\
 e = 2,79 \quad e = \cos x + tgy \tan(2a) - \frac{2\tan(a)}{1-\tan^2(a)} \\
 y = \frac{\Delta x}{\Delta z} \quad \ln = \sqrt{ax+b} \quad \sum_{n=0}^{+\infty} \frac{x^n}{n!} \quad \sin a = \frac{b}{c} \\
 Q \quad \int (x \pm a)^4 \quad \Sigma = n-1 \quad A-C = \\
 S_5 = \begin{bmatrix} 10 & 0 \\ 10 & 1 \\ 00 & 1 \end{bmatrix} \quad \phi = \sqrt{\frac{\Sigma(x-m)^2}{n-1}} \quad C = \int_2^\infty f(t) dt \\
 II \approx 3,1415 \quad \sin x \quad y = \frac{\Delta x}{\Delta z} \\
 (x+y)^2 = (\frac{y}{2})^2 \quad \frac{\Delta x}{\Delta y} = \lim_{y \rightarrow 1} \frac{\Delta x+2}{\Delta y-1} \quad \sin x \\
 -\frac{3a}{x} \quad 8x = 4 - 3y^2 \quad (x+a)^2 = x^2 + 2ax + a^2 \quad fx = \\
 y = 2x^2 + 3x \quad \ln(x(\frac{a-\sqrt{x^2}}{x})) + c \quad X_{1/2} = \frac{b \pm (a-c)}{\sqrt{2a}} \\
 e = 2,79 \quad e = \cos x + tgy \tan(2a) - \frac{2\tan(a)}{1-\tan^2(a)} \\
 X_C \quad y = \frac{\Delta x}{\Delta z} \quad \ln = \sqrt{ax+b} \quad \sum_{n=0}^{+\infty} \frac{x^n}{n!} \quad \sin a = \frac{b}{c} \\
 Q \quad \int (x \pm a)^4 \quad \Sigma = n-1 \quad A-C = \\
 S_5 = \begin{bmatrix} 10 & 0 \\ 10 & 1 \\ 00 & 1 \end{bmatrix} \quad \phi = \sqrt{\frac{\Sigma(x-m)^2}{n-1}} \quad C = \int_2^\infty f(t) dt \\
 II \approx 3,1415 \quad \sin x \quad y = \frac{\Delta x}{\Delta z} \\
 (x+y)^2 = (\frac{y}{2})^2 \quad \frac{\Delta x}{\Delta y} = \lim_{y \rightarrow 1} \frac{\Delta x+2}{\Delta y-1} \quad \sin x \\
 -\frac{3a}{x} \quad 8x = 4 - 3y^2 \quad (x+a)^2 = x^2 + 2ax + a^2 \quad fx = \\
 y = 2x^2 + 3x \quad \ln(x(\frac{a-\sqrt{x^2}}{x})) + c \quad X_{1/2} = \frac{b \pm (a-c)}{\sqrt{2a}} \\
 e = 2,79 \quad e = \cos x + tgy \tan(2a) - \frac{2\tan(a)}{1-\tan^2(a)} \\
 X_C \quad y = \frac{\Delta x}{\Delta z} \quad \ln = \sqrt{ax+b} \quad \sum_{n=0}^{+\infty} \frac{x^n}{n!} \quad \sin a = \frac{b}{c}
 \end{array}$$
[illegible]
$$\begin{array}{c}
 \begin{array}{l}
 \text{Graph of } y = \ln(x + \sqrt{x^2 + 1}) \\
 \text{Graph of } y = \frac{1}{x} \\
 \text{Graph of } y = \frac{1}{x^2} \\
 \text{Graph of } y = \frac{1}{x^3} \\
 \text{Graph of } y = \frac{1}{x^4} \\
 \text{Graph of } y = \frac{1}{x^5} \\
 \text{Graph of } y = \frac{1}{x^6} \\
 \text{Graph of } y = \frac{1}{x^7} \\
 \text{Graph of } y = \frac{1}{x^8} \\
 \text{Graph of } y = \frac{1}{x^9} \\
 \text{Graph of } y = \frac{1}{x^{10}}
 \end{array}
 \end{array}$$
$$\begin{array}{c}
 \begin{array}{l}
 \text{Graph of } y = \ln(x + \sqrt{x^2 + 1}) \\
 \text{Graph of } y = \frac{1}{x} \\
 \text{Graph of } y = \frac{1}{x^2} \\
 \text{Graph of } y = \frac{1}{x^3} \\
 \text{Graph of } y = \frac{1}{x^4} \\
 \text{Graph of } y = \frac{1}{x^5} \\
 \text{Graph of } y = \frac{1}{x^6} \\
 \text{Graph of } y = \frac{1}{x^7} \\
 \text{Graph of } y = \frac{1}{x^8} \\
 \text{Graph of } y = \frac{1}{x^9} \\
 \text{Graph of } y = \frac{1}{x^{10}}
 \end{array}
 \end{array}$$



## KS3

Teachers will set homework on Century. Students will be able to get a paper alternative if access is an issue. Students use the 'Login with Office 365' option to login and it is their school email address and password

## KS4

Teachers will set revision based homework on Century. This is key revision for their exams. We also have a wealth of extra paper revision resources available to students as either an alternative or in addition as extra revision. Students use the 'Login with Office 365' option to login and it is their school email address and password.







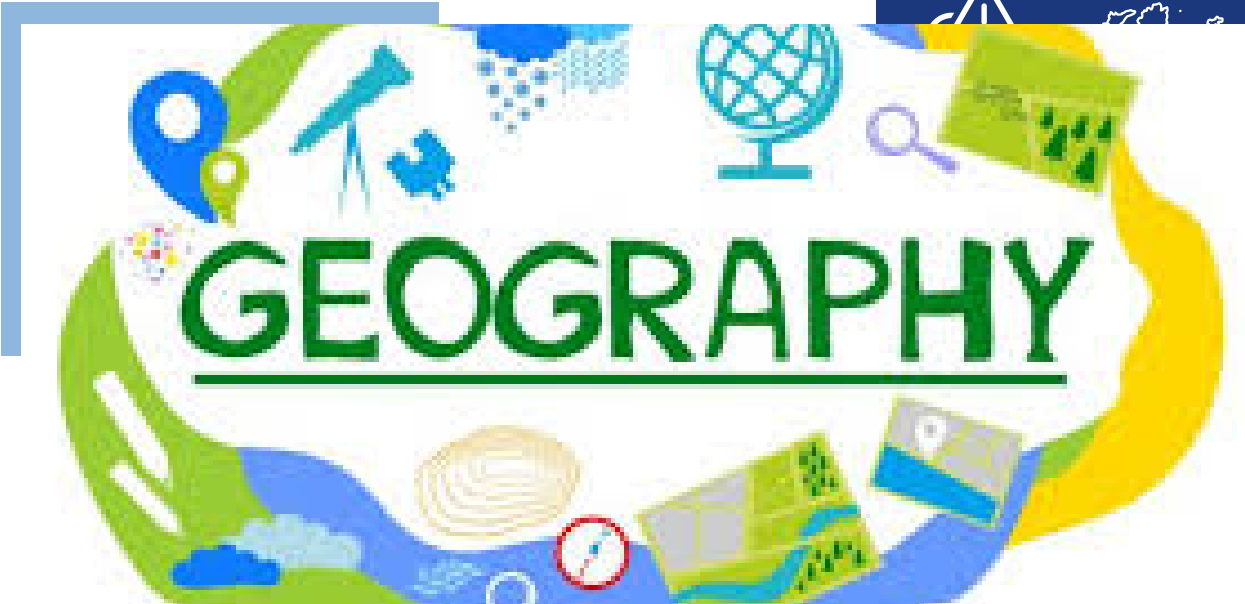
# SCIENCE

## YEARS 7 - 10

Homework is set on CENTURY. It will be released every Monday and due the following Monday. Students use their Office 365 account to login.

## YEAR 11

Paper based exam questions set every Monday and due in the following Monday. This is then stuck into books.



Homework for Geography will all be set on SENECA.

It will be extended work students can work through at their own pace.

Students' completion will be recorded on Bromcom half termly.

KS4 homework may have shorter deadlines than this based on the nature of the topic.

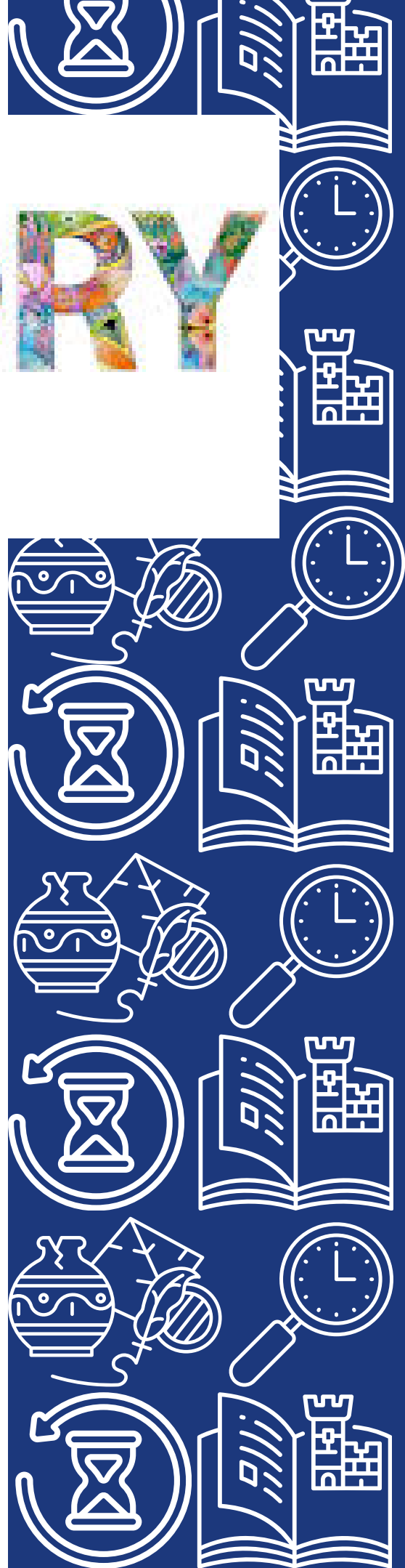


# HISTORY

Homework for History  
will all be set on  
SENECA.  
It will be extended work  
students can work  
through at their own  
pace.

Students' completion  
will be recorded on  
Bromcom half termly.

KS4 homework may  
have shorter deadlines  
than this based on the  
nature of the topic.





## YEAR 7 AND 8

Students get a homework sheet every two weeks on pink.

## YEAR 9

Students will get a homework sheet every 3 weeks on pink.

## YEAR 10 AND 11

Students will have vocabulary learning every week and revising for translations or 90 word questions 3 times per half term.





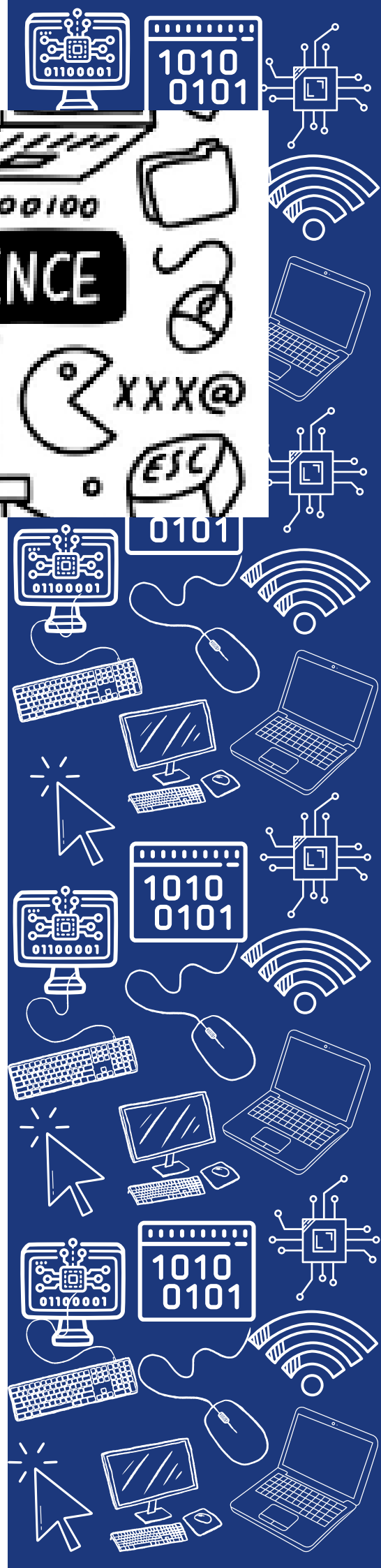
## KS3

The Inspiring Digital Enterprise Award iDEA - Online platform to develop digital, enterprise and employability skills through a series of online challenges Pupils can win career-enhancing badges and gain industry-recognised Awards .

Half termly reading homeworks - paper based

## KS4

Bi weekly - online platform smart revise and mixture of exam questions







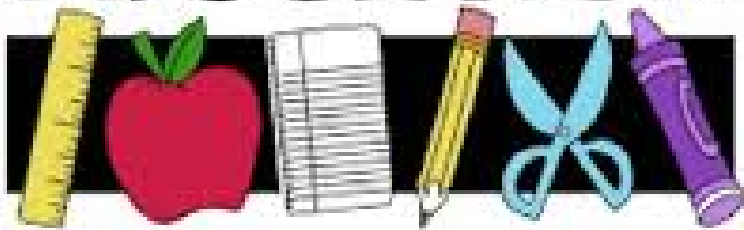
# PERFORMING ARTS

## KS4

Homework will be dependent on the students' current component for BTEC. It will be set once a week but can vary from script learning to written pieces.



# RELIGIOUS EDUCATION



## ALL YEARS

Homework will be paper based with all resources put on Bromcom and staff email addresses uploaded so parents/ carers can get support if required.



## KS3

Homework is set every half term. Students are to complete it on paper and hand it back in to their teacher. Rewards are given to those who complete it.

## KS4

Homework is set weekly. This will be explained in lessons then put onto Bromcom. Please see your teacher if you are unsure what you are expected to do.



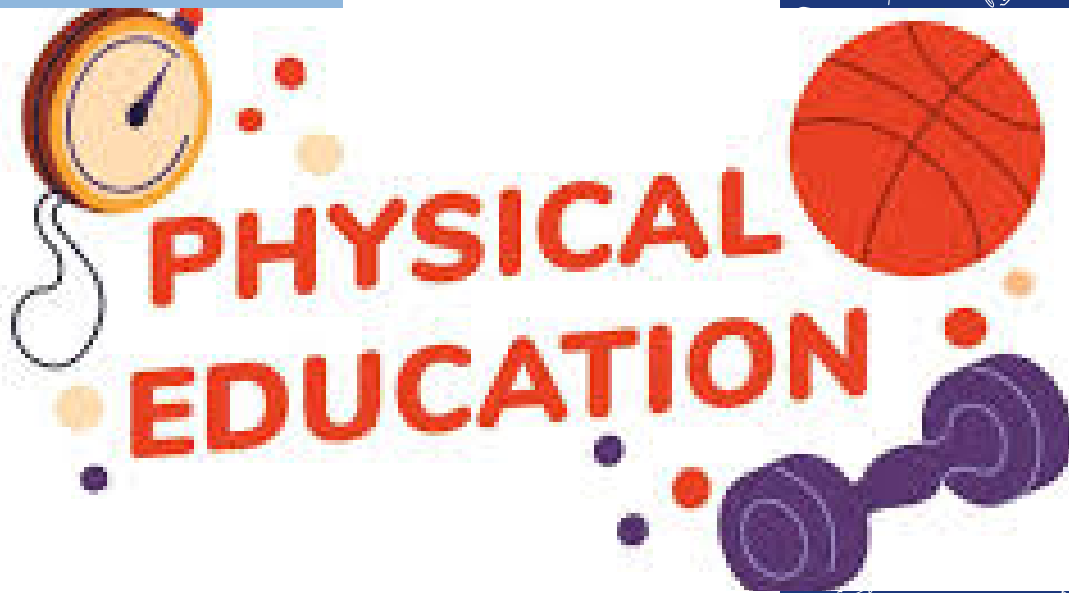


## KS3

Bring the relevant materials needed for your lessons e.g. ingredients.

## KS4 Food Technology

Homework will be set weekly and it will be linked to their NEA or it may be a written piece of work.



## **KS3**

Ensure you have full kit each lesson

## **KS4**

Homework set every other week. This will be a mixture of online and offline.

A collage of business-related icons including a laptop, lightbulb, running person, Euro symbol, envelope, bar chart, magnifying glass over dollar sign, globe, bar chart, briefcase, and at-sign, all surrounding the word BUSINESS.


# BUSINESS

## YEAR 10

Work linked to NEA this may be written homework or work that needs to be completed on the computer.

## YEAR 11

Weekly work linked to NEA and bi-weekly theory exam question homeworks starting from November.



# Sparx Maths

## LOGIN GUIDE

Visit

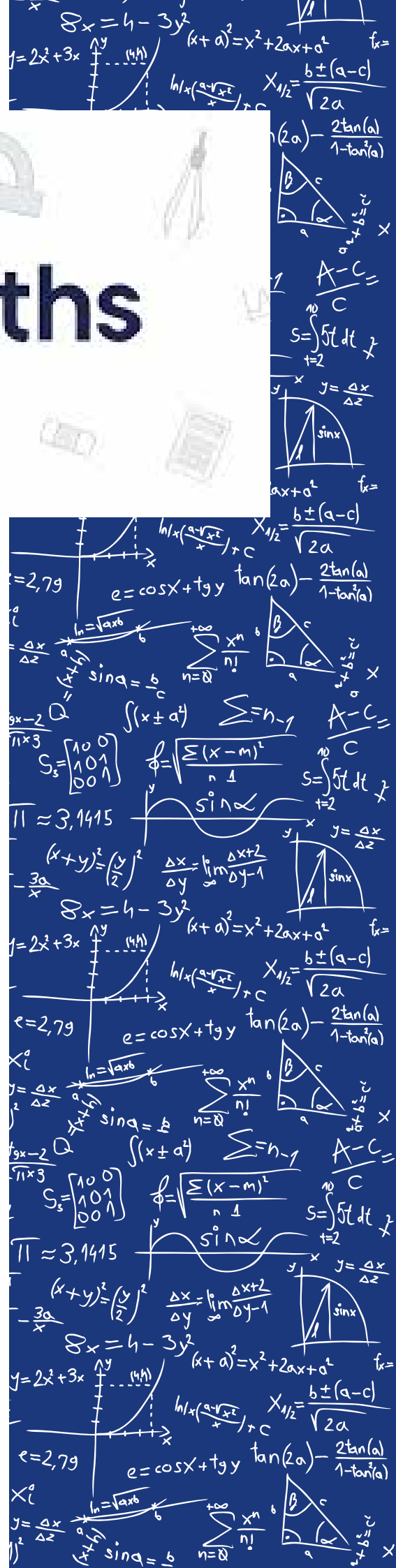
<https://sparxmaths.com/>

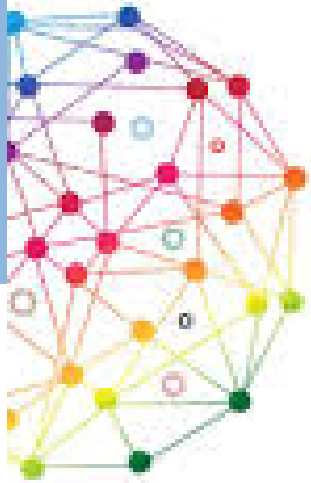
Click on login in the top right corner

Type in Darwen Vale into the box, select the school and click continue.

Click login to Sparx using Microsoft.

Use your school email details to login.





**CENTURY**  
INTELLIGENT LEARNING™

## LOGIN GUIDE

Visit  
<https://www.century.tech/>

Click on the login button  
on the top right

Click Sign in with  
Office365

Use your school email  
login details to login.





## LOGIN GUIDE

Visit  
<https://senecalearning.com/en-GB/>

Click on the login button  
on the top right

Click Continue with  
Microsoft

Use your school email  
login details to login.

