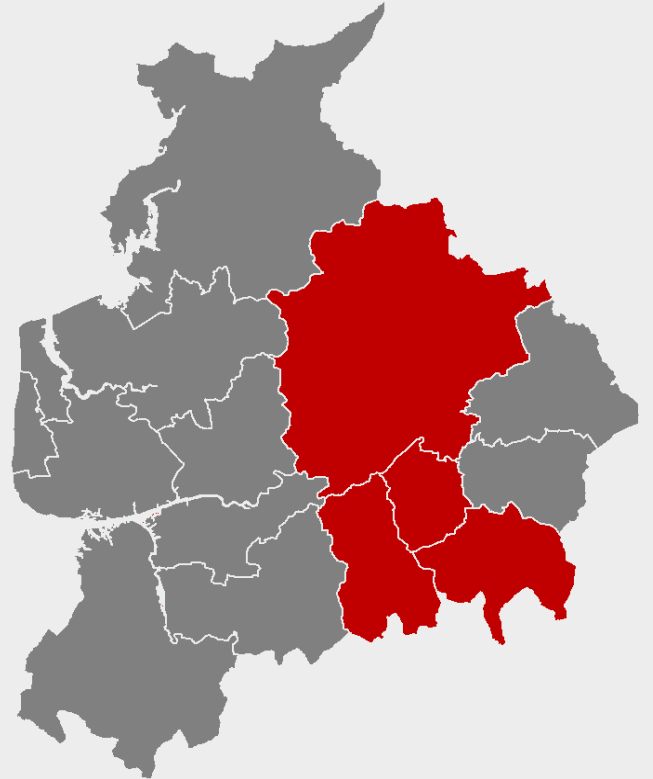




Lancashire
Enterprise Partnership

**Blackburn with
Darwen,
Hyndburn,
Rossendale and
Ribble Valley
Labour Market
Intelligence
Factsheets**

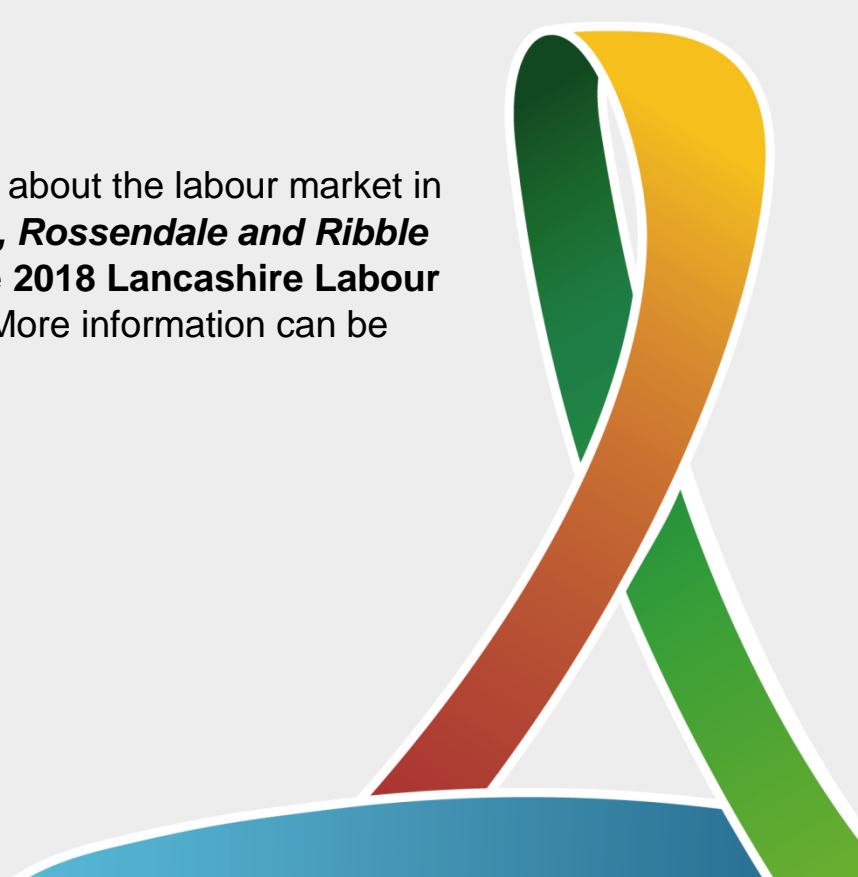


***Part of the 2018 Lancashire Labour Market
Intelligence Toolkit***

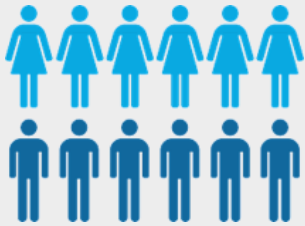
These factsheets provide information about the labour market in ***Blackburn with Darwen, Hyndburn, Rossendale and Ribble Valley***. The factsheets are part of the **2018 Lancashire Labour Market Intelligence (LMI) Toolkit**. More information can be found [here](#)



European Union
European Social Fund
Investing in jobs and skills



Introduction to the Labour Market and the Blackburn with Darwen, Hyndburn, Rossendale and Ribble Valley Travel to Work Area



The **Labour Market** includes the supply of labour by households and the demand for labour from employers.



The **Supply of Labour** is made up of the people who live and/or work in the area, the skills they have and the number of hours they want to work.



The **Demand for Labour** comes from employers (businesses and public sector organisations) – what they need in terms of skills and the number of hours they need people to work.

When there is a **mismatch** between supply and demand:



Some people might be **unemployed**, or unable to find the type of job they want to do.






Some **businesses might not be able to find the workers they need**, or might have to make do with workers who don't have quite the right skills for the job.



A **Travel to Work Area** is where most of the people who live in the area also work there. Not everyone who lives in Blackburn with Darwen, Hyndburn, Rossendale and Ribble Valley works there – some people commute to jobs in the surrounding area.

356,300	People live in the area
219,700	Are of 'working age' (aged 16-64 years)
153,600	Are in work
Two-thirds	Work within Blackburn with Darwen, Hyndburn, Rossendale and Ribble Valley
One-third	Work outside the area (mainly in Burnley and Preston)
63,300	People of working age aren't in work

There are lots of reasons why working age people aren't in work:

16,100	Have a long-term illness which means they can't work
15,300	Are students 
13,900	Have retired early or have 'other' reasons for not working
11,700	Are looking after the family or home 
5,500	Are unemployed 

Jobs held by people who live in Blackburn with Darwen, Hyndburn, Rossendale and Ribble Valley – A third of these people work outside the area

People who live in Blackburn with Darwen, Hyndburn, Rossendale and Ribble Valley work in the following occupations:

23,900

Professional occupations, including teachers, lawyers, doctors, nurses and other medical occupations, engineers, scientists, social workers, architects and surveyors.

22,700

Skilled trades occupations, including welders, mechanics, machinists, electricians, plumbers, plasterers, chefs, cooks.

19,000

Associate professional and technical occupations, including engineering, building and lab technicians, IT technicians, paramedics, police, prison and fire service officers, graphic designers, accounting technicians, health and safety officers.

17,800

Administrative and secretarial occupations, including admin officers, finance officers, office managers, secretaries, Personal Assistants (PAs) and receptionists.

17,200

Caring, leisure and other service occupations, including teaching assistants, nursery workers, care workers, hairdressers, beauticians, caretakers and housekeepers.

17,100

Managers, directors and senior officials, including all types of managers (finance, HR, sales, production etc) in all types of organisations.

16,500

Sales and customer service occupations, including sales assistants and shop workers, telesales and call centre workers and customer service managers.

15,500

Elementary occupations, including construction labourers, postal workers, cleaners, security staff, catering assistants and waiting / bar staff.

10,600

Process, plant and machine operatives, including factory workers, sewing machinists, tyre fitters, scaffolders, road and rail construction workers, lorry, bus and taxi drivers, train drivers and forklift truck drivers.



Across the labour market as a whole, **the number of jobs requiring higher level skills and qualifications has been increasing.**

How much do people in different jobs earn?



Different jobs require different levels of **skills, qualifications and experience**, and pay different levels of wages. Where you live also affects how much you earn – people who live in more expensive areas (like London) need higher wages because the costs of living (like rent and travel costs) are higher.



Average (median) full-time earnings range from £23,000 a year for people who live in Rossendale, to £28,000 for people living in Ribble Valley.

The table below shows average salaries for some jobs. This is based on national data – wages in Blackburn with Darwen, Hyndburn, Rossendale and Ribble Valley are likely to be lower, because the cost of living here is lower.

		Starting Salary	When Experienced
Professionals	Solicitor:	£25,000	£40,000+
	Architect:	£27,500	£35,000+
	Doctor:	£26,000	£37,500+
Skilled Trades	Motor Mechanic:	£18,000	£21-27,000
	Electrician:	£18,000	£25-35,000
	Chef:	£16,000	£20-30,000
Associate professionals and technicians	IT Support Technician:	£16,000	£22-24,000
	Graphic Designer:	£16,000	£20-30,000
	Paramedic	£22,000	£28,500
Administrative and secretarial occupations	Admin Assistant:	£14,000	£19-23,000
	Office Manager:	£18,000	£25-30,000
Caring, leisure and other service occupations	Hairdresser:	£14,000	£14-24,000
	Nursery Worker:	£14,000	£17-22,000
Managers, directors and senior officials	HR Manager:	£35,000	Up to £75,000
	Sales Manager:	£22,000	£30-60,000
Sales and customer service occupations	Sales Assistant:	£11,000	£16-20,000
	Call Centre Operator:	£13,500	£16-19,000
Elementary occupations	Postal Worker:	£13,500	£19,000
	Security Worker:	£13,000	£22,000
	Catering Assistant:	£11,500	Up to £16,500
Process, plant and machine operatives	Sewing Machinist:	£14,000	£15-17,500
	Scaffolder:	£14,000	£17,000

Businesses based in Blackburn with Darwen, Hyndburn, Rossendale and Ribble Valley

Jobs are available with a **range of employers:**

Private businesses



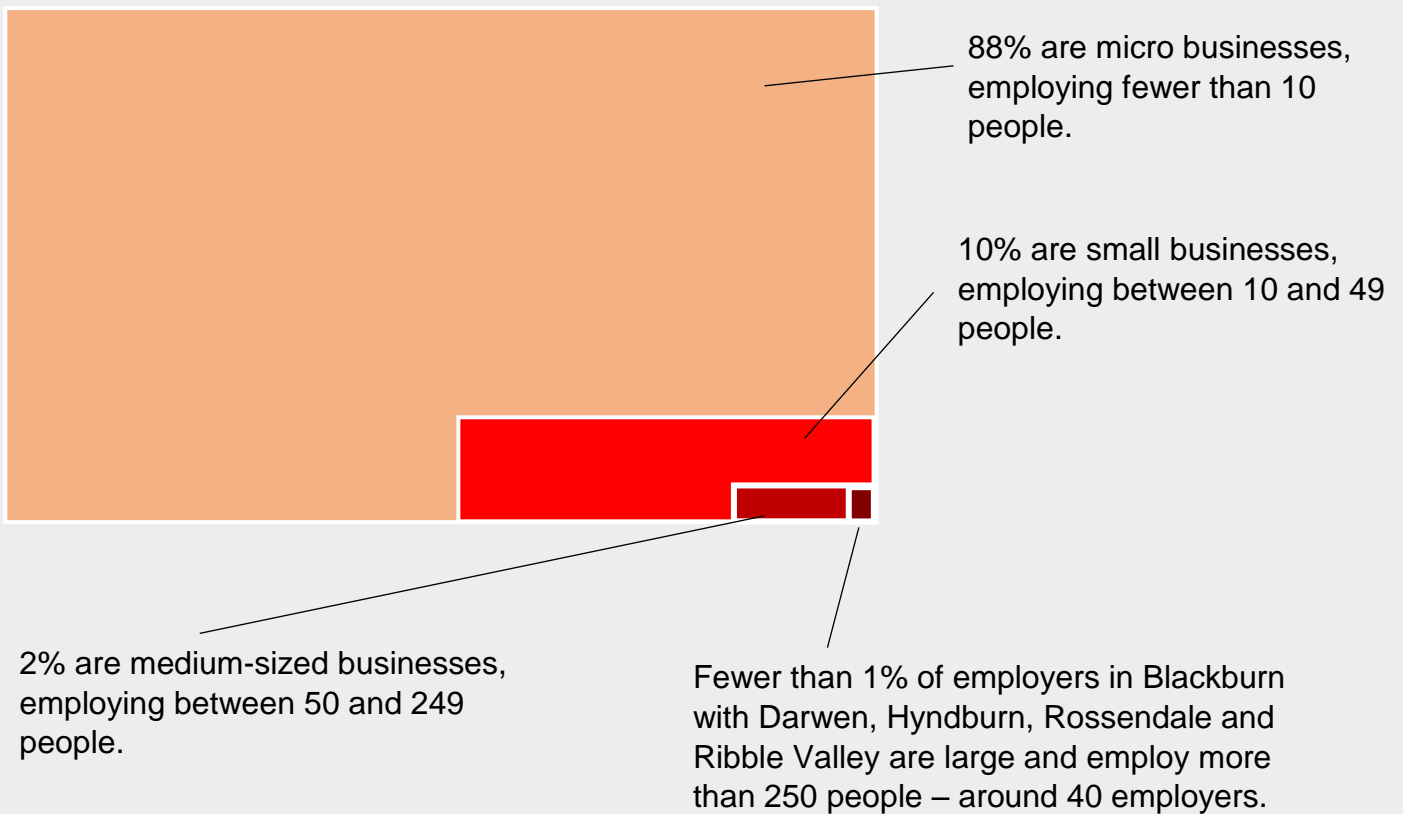
The public sector



Charities and voluntary organisations



There are **12,800 businesses** in Blackburn with Darwen, Hyndburn, Rossendale and Ribble Valley:



Location of Employment and Key Employers in Blackburn with Darwen, Hyndburn, Rossendale and Ribble Valley

This map shows where employment is concentrated across Blackburn with Darwen, Hyndburn, Rossendale and Ribble Valley. Darker areas have higher numbers of jobs. Employment is in the 12,800 micro, small, medium and large employers based in the area.

The boxes highlight some of the area's key employment locations and employers.

Clitheroe

3m Healthcare Ltd (Manufacturing)
Stoneyhurst College (Education)
Ultra Frame (Manufacturing)

Samlesbury

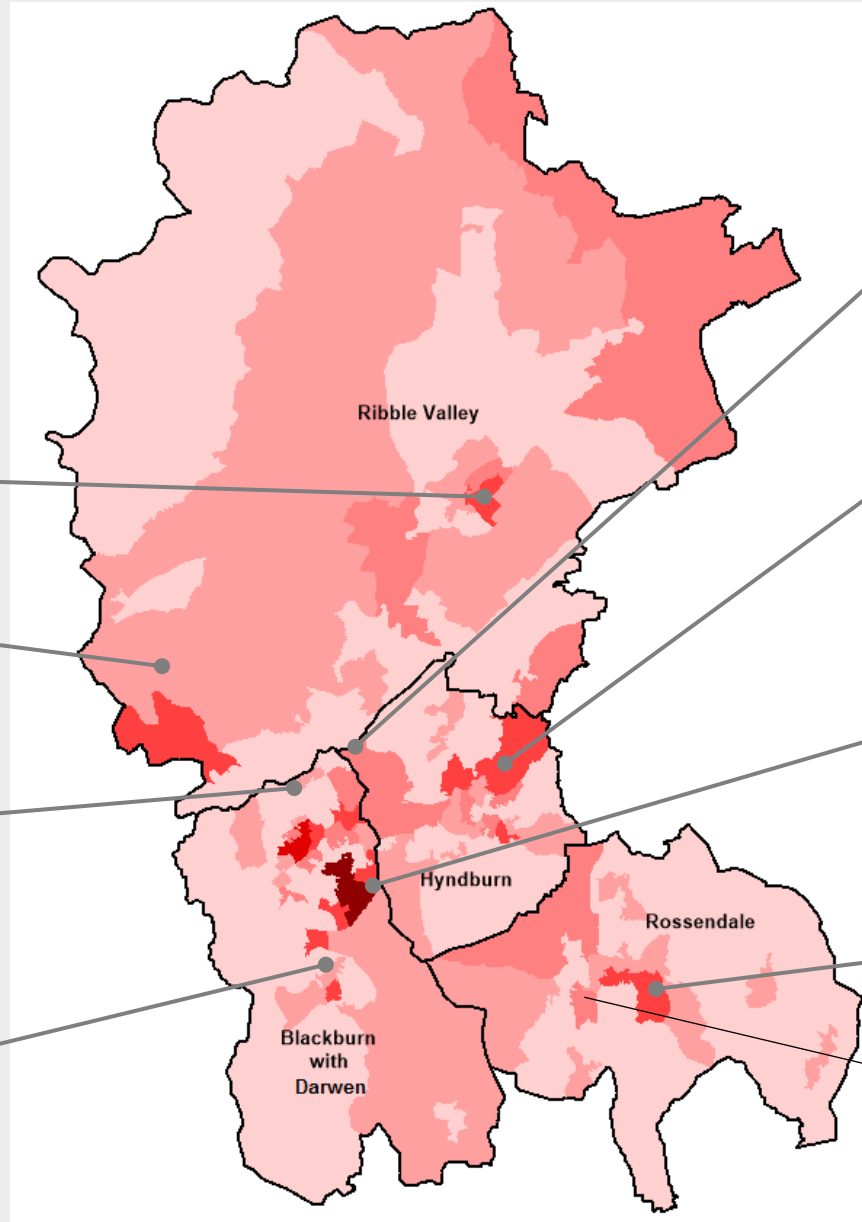
BAE Systems (Manufacturing)
Wade Group (Construction)

Blackburn Town Centre

Blackburn College (Education)
BT (Information and communication)
Capita (Real estate)
B with Us (Real estate)
Forbes Solicitors (Professional, scientific and technical activities)

Darwen

WEC Engineering & Fabrication Group (Manufacturing)
Crown Paints (Manufacturing)
Herbert Parkinson (Manufacturing)
Kaman Composites (Manufacturing)
Lucite International (Manufacturing)



North East Blackburn

Graham and Brown (Manufacturing)
Precision Polymer Engineering (Manufacturing)
Promethean
PM+M Accounting (Professional, scientific and technical activities)
Pets Choice (Manufacturing)

Accrington, Moorfield Industrial Estate and Altham, Junction 7 and Huncoat Parks

The Senator Group (Manufacturing)
24Studio (Wholesale and retail)
Exertis (Transport and storage)
Express Gifts (Information and communication)

South East Blackburn (Inc. Shadsworth Industrial Estate and Walker Industrial Park)

Accrol Papers (Manufacturing)
Royal Blackburn Hospital (Health)
Vital Energi (Manufacturing)
BBF (Food manufacturing)
EuroGarages (Wholesale and retail)

Bacup

SPM Plastics (Manufacturing)
E Sutton Group (Manufacturing)
J & J Ormerod PLC (Manufacturing)

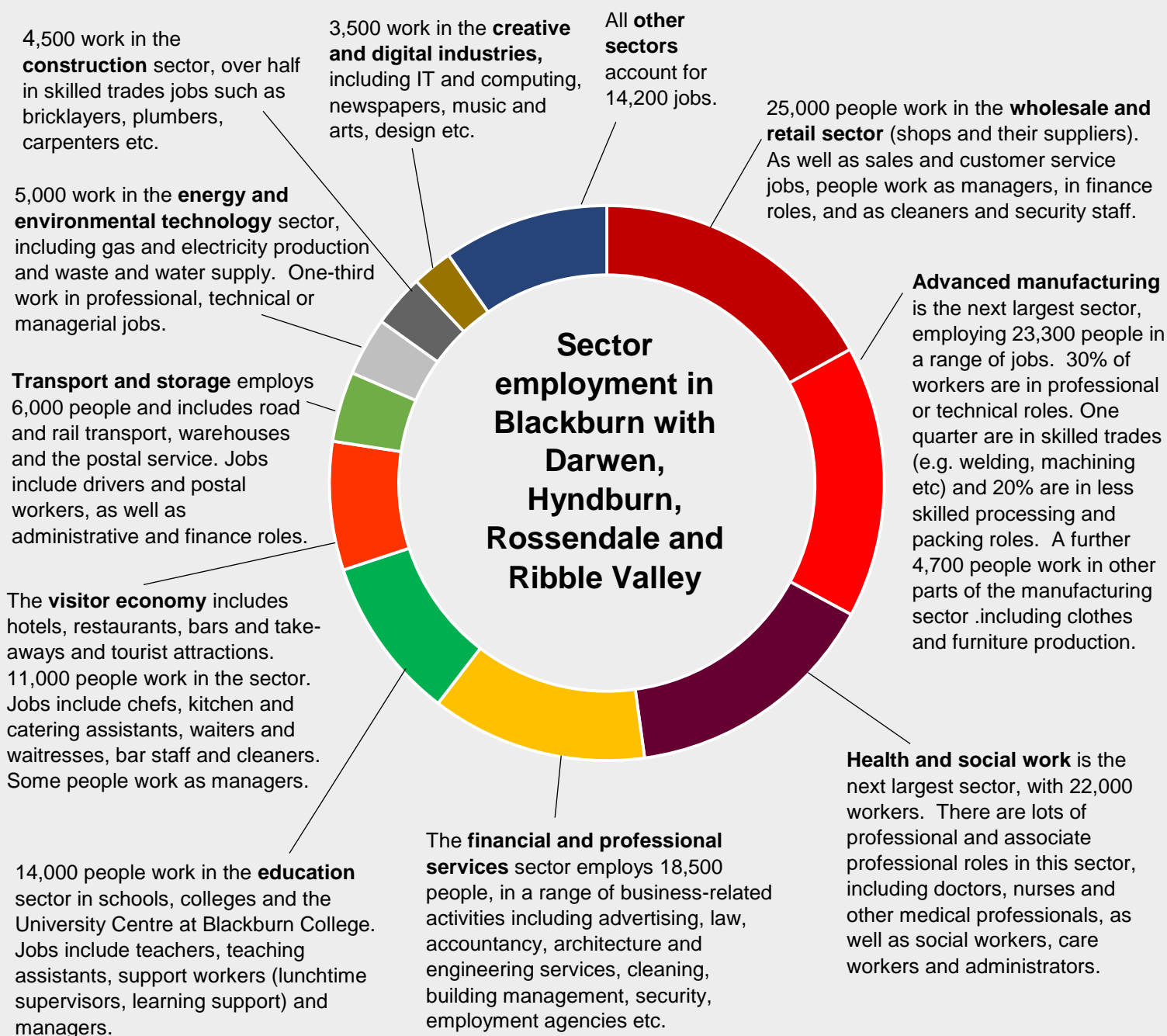
Haslingden

Holland Pies (Manufacturing)
Driver Group (Construction)
Solomon Commercials Limited (Manufacturing)

Employers are classed as being in different '**sectors**', according to what they make or do.

Some jobs are found in all sectors (e.g. Managers, Finance Officers, IT workers and people with digital skills); others are concentrated in particular sectors (e.g. Bricklayers work in the construction sector, Doctors work in the health sector).

The largest sectors in Blackburn with Darwen, Hyndburn, Rossendale and Ribble Valley, and the jobs available within them, are shown below:



Future Job Opportunities and Skills Needs in Blackburn with Darwen, Hyndburn, Rossendale and Ribble Valley

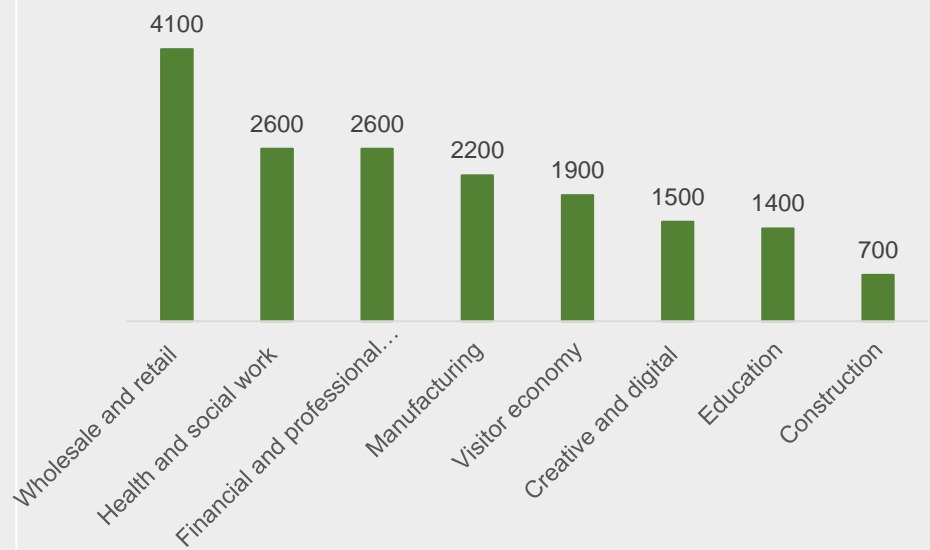
The **economy and labour market are always changing**, with jobs being lost and new ones created.

Some job opportunities arise because businesses or sectors are **growing**.

Others come about because of '**churn**' within the labour market – when current workers change jobs or retire. This is called '**replacement demand**'.

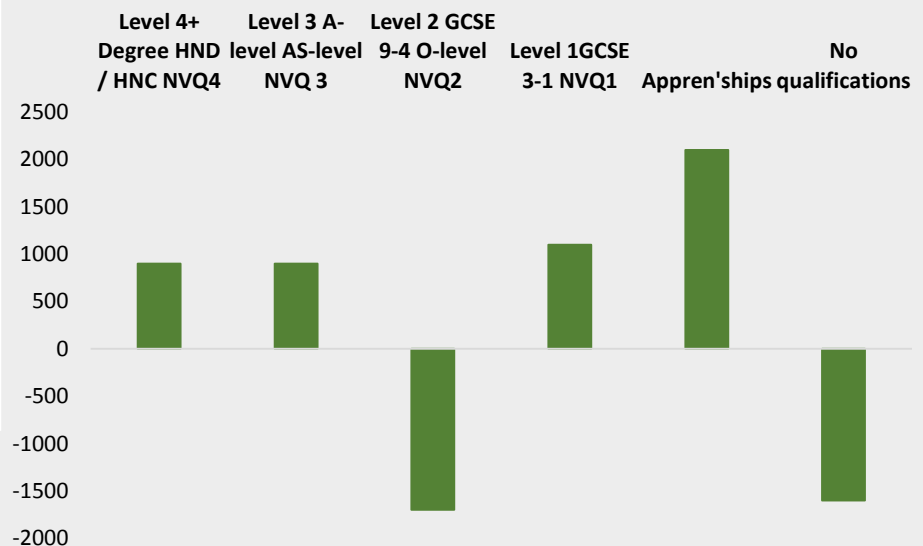
Every year, there are thousands of job opportunities in Blackburn with Darwen, Hyndburn, Rossendale and Ribble Valley.

These charts show how many job opportunities are expected to be created each year. The wholesale and retail sector has a lot of 'churn' (people moving jobs), so will have the highest number of opportunities.



Demand is increasing for workers with higher level qualifications (level 3 and 4) and apprenticeships.

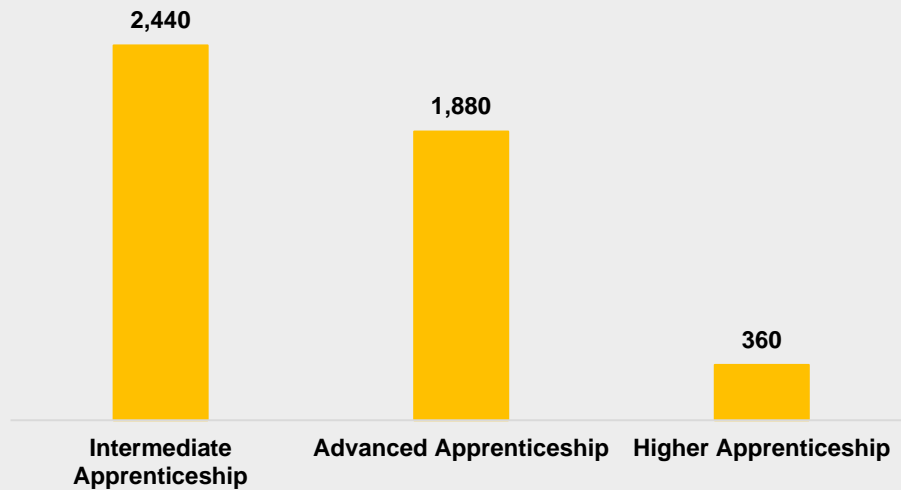
Demand for workers with no qualifications is expected to continue to fall.



Apprenticeships

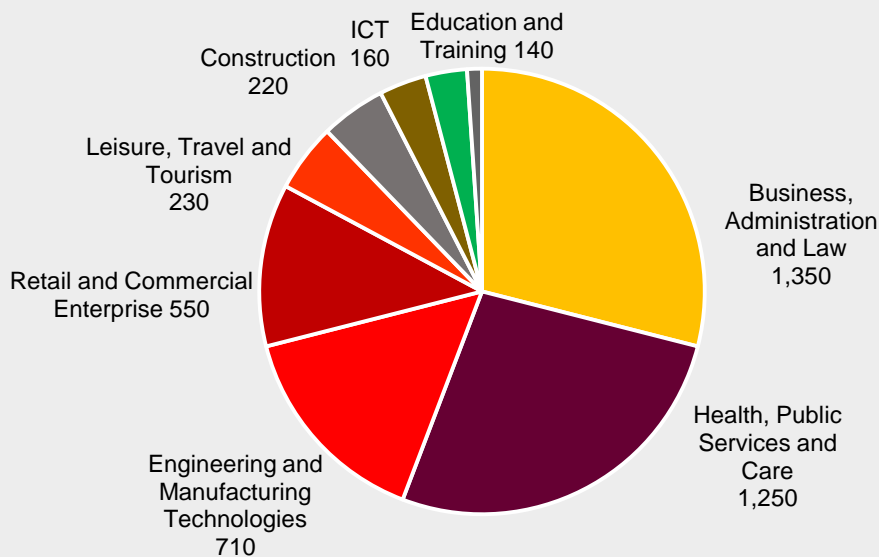
More employers are choosing apprenticeships as a way to get the people and skills they need. An apprenticeship gives people hands-on experience, a salary and the opportunity to train while they work, in a range of different industries.

4,680 people started an apprenticeship in Blackburn with Darwen, Hyndburn, Rossendale and Ribble Valley in 2016/17. Just under half of these were advanced or higher level apprenticeships.



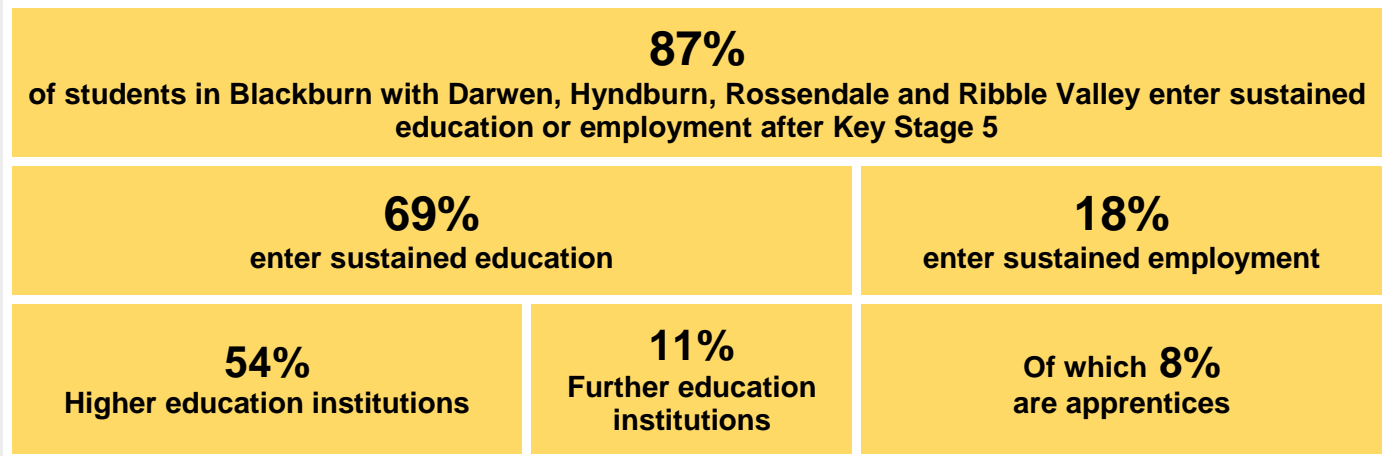
Apprenticeship starts are broadly in line with the main employment sectors:

- Business, administration and law can prepare you for a career in the financial and professional services.
- Health, public services and care for the health and social work sector.
- Engineering and manufacturing technologies for the advanced manufacturing sector.

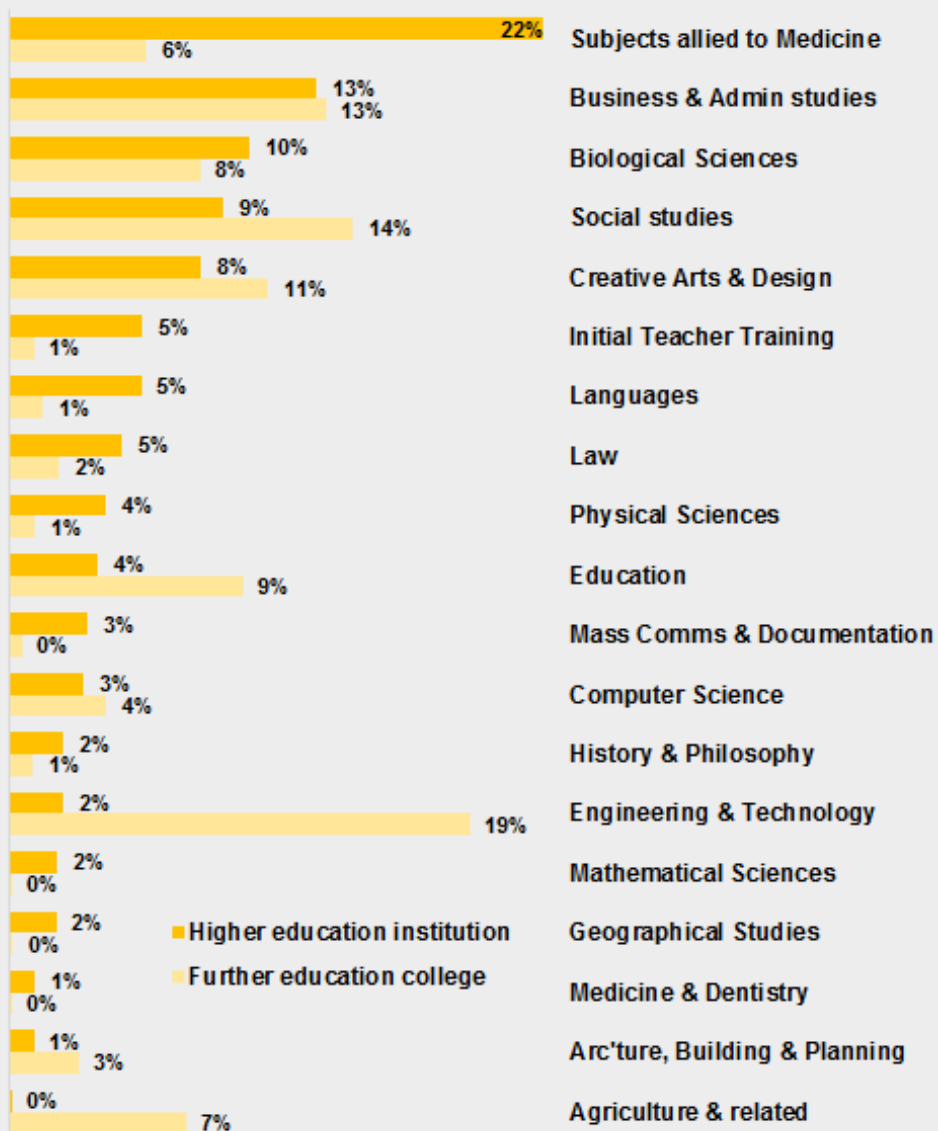


Options for those aged 18+

At the age of 18, some young people continue in education at a higher education institution (e.g. university) or further education institution (e.g. college), whilst others enter employment or become an apprentice.



49% of Lancashire residents who enter higher education study in Lancashire, either at University or at one of the twelve Further Education Colleges which provide higher education. Higher education students in Lancashire study a range of subjects:





For more detailed information on the labour market in Lancashire:

Lancashire Skills and Employment Hub

<https://www.lancashireskillshub.co.uk/>

For more detailed information on jobs and careers:

National Careers Service

<https://nationalcareersservice.direct.gov.uk/>

For information on education, training and routes into work:

Colleges:

<http://www.tlc.ac.uk/>

Universities:

<https://www.ucas.com/>

Apprenticeships and Traineeships:

<http://www.getingofar.gov.uk/>

Training Providers:

<http://www.lancsforum.co.uk/>